

PARENTAL CONTROL GUIDE

2. WHAT IS PARENTAL CONTROL?

TOOLS

DIFFERENT FUNCTIONS FOR EVERY NEED



- **CONTENT FILTERING:** THROUGH DIFFERENT SYSTEMS, IT BLOCKS THE MINOR'S ACCESS TO CERTAIN INAPPROPRIATE CONTENT (USUALLY SEXUAL OR VIOLENT CONNOTATION).



- **TIME CONTROL:** ISSUE ALERTS OR INTERRUPT NAVIGATION WHEN REACH A CERTAIN TIME OR TIME LIMIT.



- **ACTIVITY MONITORING:** GENERATE REPORTS WITH THE HISTORY OF BROWSING, SEARCHING OR MULTIMEDIA PLAYBACK.

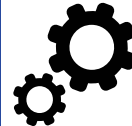


- **GEOLOCATION:** FOLLOWS THE CURRENT POSITION AND PREVIOUS ROUTE OF THE DEVICE.



- **CONFIGURATION PROTECTION:** PREVENT UNWANTED MODIFICATIONS OF PARENTAL CONTROL SETTINGS.

HOW DO WE CLASSIFY PARENTAL CONTROL TOOLS IN THIS GUIDE?



- **OPERATING SYSTEM:** CONTROL SETTINGS PARENTAL PRESENT IN THE CONFIGURATION OPTIONS OF EACH DEVICE OR SERVICE. DO NOT REQUIRE INSTALLATION SINCE THEY ARE INCORPORATED INTO THE SYSTEM.



- **PARENTAL CONTROL APPS:** APPS OR PROGRAMS THAT LIMIT OR CONTROL FUNCTIONS AVAILABLE WHEN USING A MOBILE DEVICE, TABLET OR COMPUTER.



- **CONTENT PROVIDERS:** PLATFORMS PLAYBACK OR SEARCH THAT OFFER A SET LIMITED AMOUNT OF CONTENT APPROPRIATE FOR MINORS.



- **SOCIAL MEDIA OPTIONS:** WELLNESS SETTINGS DIGITAL AVAILABLE ON SOCIAL NETWORKS, WHICH LIMIT OR MONITOR THE MINOR'S ONLINE ACTIVITY.

3. OPERATING SYSTEM OPTIONS

Android



Device: 

Configurable device options
mobiles with Android system.

Functions



Time control: you can set timers for each application. When the allowed time expires, the application will be paused until the next day.



Supervision: from the control panel you can review the time of daily use, the times it has been unlocked and the notifications that have been received.



Settings protection: you can block this settings if you use Family Link

Time



Device:  

Free tool for mobile devices and
computers with macOS and iOS systems.

Functions



Content filtering: allows you to restrict targeted web pages to adult audiences, or limit access only to those websites as we determine, as well as configure privacy settings.



Time control: it is possible to define how long the You can use each app a day as well as set a time of inactivity, a period of time during which the computer will be suspended, except for those applications to which let's give permission



Supervision: allows you to keep track of time, as well as check in which applications it has been used, how many notifications have been received and how many times the phone has been unlocked device.



Settings protection: you can lock all settings with a password so that the minor cannot modify them without authorization.

3. OPERATING SYSTEM OPTIONS

Familiar Control Microsoft



Content filtering: allows you to limit the websites assigned by categories, asking to establish lists of allowed pages and blocked. It also allows you to restrict the use of the browser and other apps.



Time control: allows you to set the number of hours per day, as well as its time zone.

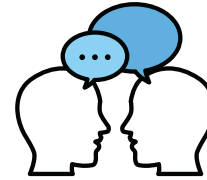


Monitoring: allows you to set monitoring levels, configure categories for blocking and allowed and restricted websites.

Calls: allows you to block or unblock phone numbers. calendar, and block unknown or international calls.



Multi-device control: allows you to manage control from any other device, adding multiple users to the account and devices.



3. OPERATING SYSTEM OPTIONS

SAMSUNG



Parental control options in Samsung smart TVs.

Device: Device:

Content filtering: allows you to block programs based on the age rating, as well as the applications and programs to which the minor can access.

Settings protection: Settings are locked with a pin code.

Connectivity with other associated devices: possibility of use a linked Samsung mobile to control the television distance and control settings



Panasonic

PANASONIC

Parental control options in Panasonic smart TVs.

Content filtering: allows you to restrict access to channels that you consider inappropriate and block applications that you do not minors must access.

Settings protection: Settings are locked with a pin code.



3. OPERATING SYSTEM OPTIONS

LG



Content filtering: you can manually block access to applications and channels that you do not consider appropriate for your child, as well as filter the programs according to their age.

Settings protection: Settings are locked with a pin code.

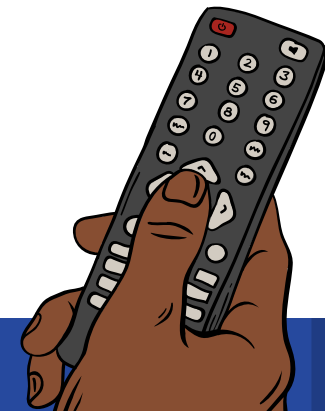


PLAYSTATION



Content filtering: allows you to set an age restriction for games and other audiovisual content according to the code PEGI. By connecting to the Internet on Playstation Network, it is possible prevent communication with other Playstation users and the access to content created by other players.

Time control: you can establish a weekly schedule of game time, a duration for each game session and/or a ending time.



3. OPERATING SYSTEM OPTIONS

xbox

DEVICE:



PARENTAL CONTROL
SETTINGS ON THE CONSOLE
XBOX ONE.



FUNCTIONS

CONTENT FILTERING: CREATING A FAMILY ACCOUNT GROUP ADMINISTERED BY AN ADULT, ALLOWS YOU TO LIMIT THE GAMES TO WHICH THE MINOR CAN ACCESS WEB SEARCHES AND SPECIFIC PAGES. IT IS ALSO POSSIBLE TO RESTRICT ACCESS TO APPLICATIONS AND GAMES DETERMINED BY THE FAMILY ADMINISTRATOR, AS WELL AS LIMIT THE PURCHASES IN THE VIRTUAL STORE.



TIME TRACKING: ALLOWS YOU TO SET A DAILY REMINDER. TIME, WHICH WILL NOTIFY THE MINOR WHEN THE TIME HAS ELAPSED ESTABLISHED.



MONITORING: YOU CAN RECEIVE A WEEKLY REPORT BY EMAIL EMAIL WITH A SUMMARY OF THE GAME SESSIONS, THE DURATION OF THE SAME, THE GAMES AND CONTENT THAT YOU HAVE ACCESSED AND DURING HOW LONG.



Nintendo Switch

DEVICE:



PARENTAL CONTROL AND
CONSOLE OPTIONS.



FUNCTIONS

CONTENT FILTERING: ALLOWS YOU TO RESTRICT THOSE GAMES THAT ARE NOT APPROPRIATE FOR OUR CHILD, ACCORDING TO THE AGE CLASSIFICATION ESTABLISHED BY PEGI. ADDITIONALLY, IT IS POSSIBLE TO PREVENT COMMUNICATION WITH OTHER USERS AND POSTING SCREENSHOTS ON SOCIAL NETWORKS.



TIME CONTROL: YOU CAN SET A WEEKLY SCHEDULE OF ALLOWED PLAYING TIME. AS THE GAME SESSION APPROACHES SET TIME, AN ALARM ALERTS YOUR CHILD TO TURN OFF THE CONSOLE. IT IS ALSO POSSIBLE TO ACTIVATE THE 'SUSPEND PROGRAM' FUNCTION SO THAT THE CONSOLE EXITS THE GAME AUTOMATICALLY WHEN FINISHED TIME.



MONITORING: THE APPLICATION PRODUCES A DAILY USAGE REPORT, INDICATING THE GAMES YOU HAVE ACCESSED AND FOR HOW LONG.



4. PARENTAL CONTROL APPS

FAMILY LINK



DEVICE: 

GOOGLE TOOL FOR DEVICES
MOBILES WITH ANDROID SYSTEM.

FEATURES



CONTENT FILTERING: ALLOWS YOU TO RESTRICT APPLICATIONS APPROVING OR BLOCKING THOSE YOU WANT TO DOWNLOAD FROM GOOGLE PLAY STORE.



CONTROL DE TIEMPO: PUEDES ESTABLECER LÍMITES DE TIEMPO DIARIOS Y CONFIGURAR UNA HORA DE DORMIR EN EL DISPOSITIVO.



MONITORING: ALLOWS YOU TO SEE HOW MUCH TIME YOU USE EACH APPLICATION THROUGH WEEKLY OR MONTHLY ACTIVITY REPORTS.



GEOLOCATION: ALLOWS YOU TO SEE THE LOCATION OF YOUR MOBILE DEVICE SON/DAUGHTER

FAMILY TIME

DEVICE: 

GOOGLE TOOL FOR DEVICES
MOBILES WITH ANDROID SYSTEM.

FEATURES

CONTENT FILTERING: ALLOWS YOU TO RESTRICT APPLICATIONS UNSUITABLE FOR THE CHILD.

TIME CONTROL: YOU CAN SET A MAXIMUM TIME FOR EVERY APP OR GAME.

MONITORING: COLLECTS INFORMATION ABOUT INSTALLED APPLICATIONS, CONTACTS, MESSAGES, AND NAVIGATION. IT ALSO TRACKS MESSAGES AND CALLS.

GEOLOCATION: PROVIDES INFORMATION ABOUT THE LOCATION OF THE DEVICE.



4. Parental control apps

SECUREKIDS

DEVICE: 



TOOL FOR MOBILE DEVICES WITH ANDROID SYSTEM.

FUNCTIONS



CONTENT FILTERING: ALLOWS YOU TO RESTRICT WEB PAGES INDIVIDUALLY OR BY CATEGORIES, LIMIT THE USE OF BROWSERS BY TIME OR IN FULL, INSTALL THE SAFE SEARCH OPTION AND CONTROL ACCESS TO APPLICATIONS.

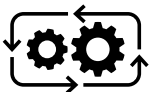


TIME CONTROL: YOU CAN SET SCHEDULED ALARMS AND INSTANT ALARMS TO BE SENT TO THE DEVICE OR LOCK THE DEVICE ACCORDING TO A SCHEDULE.




MONITORING - COLLECT INFORMATION ABOUT USAGE AND APPS MOST USED.



GEOLOCATION: ALLOWS YOU TO LOCATE THE DEVICE AND HAS A ALARM BUTTON, WHICH WILL INDICATE THE POSITION ALONG WITH CAPTURING A PICTURE.



QUSTODIO

Device:   

Funciones

CONTENT FILTERING: ALLOWS YOU TO RESTRICT ACCESS TO CERTAIN CATEGORIES OF WEBSITES, ISSUING ALERTS WHEN TRY TO ACCESS UNAUTHORIZED WEB PAGES.



TIME CONTROL: YOU CAN LOCK THE DEVICE OR AN APPLICATION DETERMINED ACCORDING TO A SCHEDULE.



MONITORING - COLLECT INFORMATION ABOUT USAGE AND APPS MOST USED, AS WELL AS THE TIME SPENT ON EACH OF THEM.

4. PARENTAL CONTROL APPS



NORTON FAMILY:

DEVICE:  

PARENTAL CONTROL TOOL FOR ANDROID AND IOS MOBILE DEVICES.

FUNCTIONS

CONTENT FILTERING: ALLOWS YOU TO LIMIT THE WEBSITES ASSIGNED BY CATEGORIES, ASKING TO ESTABLISH LISTS OF ALLOWED PAGES AND BLOCKED. IT ALSO ALLOWS YOU TO RESTRICT THE USE OF THE BROWSER AND OTHER APPS.



TIME CONTROL: ALLOWS YOU TO SET THE NUMBER OF HOURS PER DAY, AS WELL AS ITS TIME ZONE.



MONITORING: ALLOWS YOU TO SET MONITORING LEVELS, CONFIGURE CATEGORIES FOR BLOCKING AND ALLOWED AND RESTRICTED WEBSITES.



ESET PARENTAL CONTROL:

DEVICE  

PARENTAL CONTROL TOOL FOR ANDROID MOBILE DEVICES.

FUNCTIONS

CONTENT FILTERING: ALLOWS YOU TO FILTER WEB PAGES BY CATEGORIES, RESTRICTING CERTAIN TYPES OF WEBSITES, RECEIVING ALERTS WHEN THE MINOR WANTS TO ACCESS A WEBSITE CLASSIFIED AS INAPPROPRIATE. YOU CAN ALSO BLOCK ACCESS TO APPLICATIONS.

TIME CONTROL: ALLOWS THE USE OF THOSE APPLICATIONS CLASSIFIED AS PLAY AND FUN DURING THE NUMBER OF HOURS/DAYS SPECIFIED.

SUPERVISION: PERFORM WEB CONTROL AND USAGE REPORTS APPLICATIONS.

GEOLOCATION: LOCATION TRACKING OPTION DEVICE.

PARENTAL CONTROL APPS

Screen time

Devices 

Parental control tool for android and ios mobile devices

Functions

Content filtering: Allows you to restrict content.

Time control: allows you to set the device usage time

Mobile, both in the device as a whole and in applications.

concrete.

Supervision: allows you to control the use that is being made of the Allowed applications on the mobile device.

Extras

Notifications:Through the web control panel you can configure the notifications received by email and daily reports

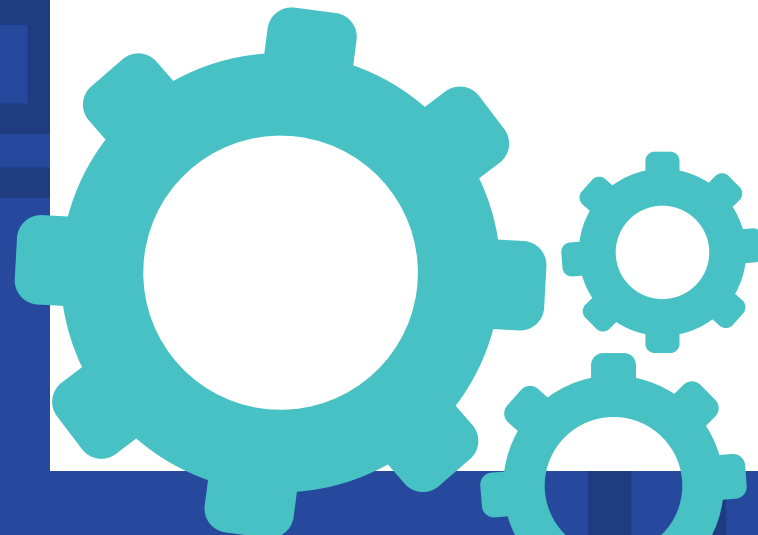
Vodafone secure net

Devices 

Parental control For vodafone customers

Functions

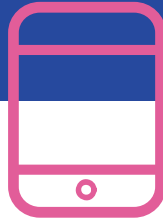
Content filtering:allows you to restrict content by categories (for example: social networks, violence, etc.), as well as blocking specific websites.



4. Parental control apps



KIDS READY



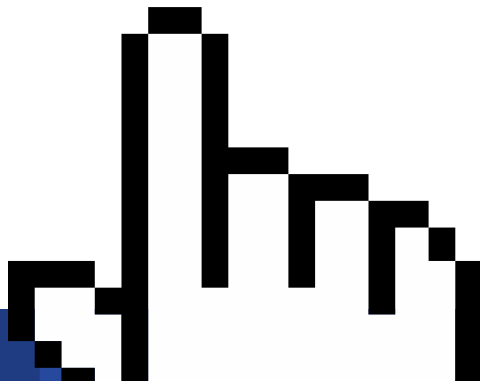
PARENTAL CONTROL SERVICE FOR CUSTOMERS
ORANGE

FUNCTIONS

Content filtering: allows you to limit the content to which the minor can access, as well as prevent access to certain applications that we consider inappropriate.

Time control: you can set a time when
Allow access to applications.

Monitoring: You can monitor the applications your device has used. son/daughter, the time he/she has spent on them and the web pages to which he/she has logged in (feature not available on iOS devices).



LOCATEGY



PARENTAL CONTROL TOOL FOR
DEVICES
MOBILES.

FUNCTIONS

Content filtering: allows you to disable the use of applications, as well as access to web content not suitable for minors.



PROVEEDORES DE CONTENIDOS

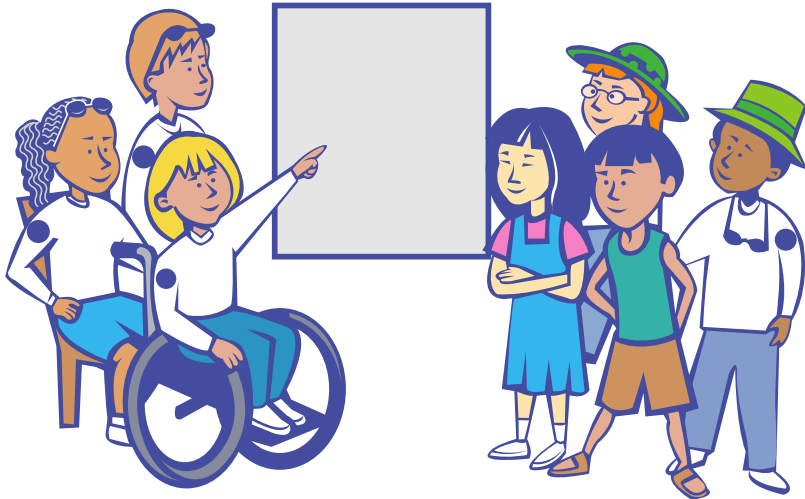
MOVISTAR JUNIOR

FUNCIONES

Content filtering: allows you to limit access to content assigned to the chosen age range (0 to 4 years, 5 to 7 years or 8 to 12 years).

Time control: you can set a schedule or limit use time, between 5 and 180 minutes, after which the application stops allow the display of content.

Settings protection: Set a PIN code to protect access to application settings from unwanted modifications.



YOUTUBE KIDS

FUNCIONES

Content filtering: allows you to adapt the videos that are show the maturity of the minor: preschoolers (under 5 years old), young children (between 5 and 7 years old) and older children (between 8 and 12 years).

Time control: You can set a display time, and Once finished, the app locks automatically.

Settings protection: Set a PIN code or verify the settings by solving a simple mathematical operation.

EXTRAS

Blocking channels: you can block channels and videos that you consider appropriate.

Deactivating the 'search' function: restricts the channels to the that can be accessed, limiting it to those verified by Youtube Kids as suitable for minors.

Synchronization with Family Link: offers the option to perform settings in the application's parental control (see page 8).



5. CONTENT PROVIDERS

NETFLIX



FUNCTIONS

CONTENT FILTERING: LIMIT SERIES, MOVIES OR PROGRAMS QUALIFIED FOR AGES GREATER THAN THAT ESTABLISHED IN EACH PROFILE, AND ALLOWS YOU TO MANUALLY BLOCK THOSE CONTENTS THAT YOU CONSIDER INADEQUATE.

SETTINGS PROTECTION: SET A PIN CODE TO PROTECT ACCESS TO APPLICATION SETTINGS FROM UNWANTED MODIFICATIONS.

USER PROFILES: YOU CAN SET DIFFERENT PROFILES ADAPTED TO THEIR AGE AND MATURITY, WHERE THE PREFERENCES DEPENDING ON THE CONTENT THEY VIEW.

GOOGLE SEARCH



FUNCTIONS

Content filtering: allows you to filter explicit sexual content among the results. It must be complemented with our supervision, given that it does not prevent the minor from directly accessing a web page or use another browser from the same device.



It is necessary to configure each browser and each user account.



TECHNOLOGY



PARENTAL CONTROL OPTIONS AVAILABLE ON THE HBO SPAIN SERVICE.



CONTENT FILTERING: OFFERS A KIDS SECTION WITH SERIES, FILMS OR DOCUMENTARIES SUITABLE FOR MINORS. HAS TO BE COMPLEMENTED BY OUR SUPERVISION, SINCE THEY DO NOT DIFFER



THE CONTENTS FOR THE DIFFERENT AGE GROUPS.
SETTINGS PROTECTION: SET A PIN CODE TO PROTECT ACCESS TO APP SETTINGS OR EXIT THE APP. KIDS SECTION.



PARENTAL CONTROL OPTIONS AVAILABLE ON THE PRIME VIDEO SERVICE.

CONTENT FILTERING: ALLOWS YOU TO ESTABLISH PROFILES FOR CHILDREN OR WITH AGE RESTRICTION THAT WILL ADAPT CONTENT SUGGESTIONS

TAKING INTO ACCOUNT YOUR VIEWING HISTORY

THE SEARCH ENGINE WILL OFFER RESULTS OF CONTENT RATED FOR CHILDREN UP TO 12 YEARS OLD.
SETTINGS PROTECTION: SET A PIN CODE TO PROTECT ACCESS TO PLATFORM SETTINGS AGAINST

UNWANTED MODIFICATIONS.

SUPERVISION: THIS TOOL MUST BE COMPLEMENTED WITH PARENTAL SUPERVISION, SINCE DOWNLOADS OF CONTENT OF ALL PROFILES.

APP LOCK: ALLOWS YOU TO RESTRICT PURCHASES ON THE PRIME VIDEO VIRTUAL STORE USING THE RESTRICTION PIN PURCHASES (ALSO VALID



5. CONTENT PROVIDERS

ORANGE TV



SLIDES

PARENTAL CONTROL OPTIONS
AVAILABLE IN
ORANGE TV.

FUNCTIONS

Content filtering:



allows you to view content suitable for age of the minor, as well as blocking access to low content demand

Settings protection:



allows you to set a PIN code to protect access to platform settings against unwanted modifications.



5. CONTENT PROVIDERS

ORANGE TV



PARENTAL CONTROL OPTIONS AVAILABLE IN ORANGE TV.

FUNCTIONS

CONTENT FILTERING: ALLOWS YOU TO VIEW CONTENT SUITABLE FOR AGE OF THE MINOR, AS WELL AS BLOCKING ACCESS TO LOW CONTENT DEMAND.

SETTINGS PROTECTION: SET A PIN CODE TO PROTECT ACCESS TO PLATFORM SETTINGS AGAINST UNWANTED MODIFICATIONS.

VODAFONE TV KIDS



PARENTAL CONTROL OPTIONS AVAILABLE IN VODAFONE KIDS.

FUNCTIONS

CONTENT FILTERING: ALLOWS YOU TO VIEW CONTENT SUITABLE FOR MINOR BASED ON THEIR AGE RANGE FROM THE 'KIDS MODE' SECTION.

TIME CONTROL: ALLOWS YOU TO CONTROL THE VIEWING TIME AND DEFINE THE ACCESS TIMES TO THE CONTENTS SUITABLE FOR THE MINOR.

SETTINGS PROTECTION: SET A PIN CODE TO PROTECT ACCESS TO APPLICATION SETTINGS FROM UNWANTED MODIFICATIONS. REQUIRES SETTING UP A PIN ON THE SET-TOP BOX TO BLOCK UNSUITABLE CONTENT. CHILDREN.

5. CONTENT PROVIDERS

DISNEY+

Device:   

Parental control options available on the Disney+ service.

FUNCTIONS



Content filtering: limit series, movies or programs with age range higher than that established in the child user profile.



Settings protection: Set a PIN code or activate a security question to protect access to the application settings against unwanted modifications.

ADDITIONAL FEATURES



User profiles: a profile adapted to a user can be established specific age or range that allows the content to be reproduced suitable for said profile.

MOVIESTAR+



Parental control options available on the Movistar + service.

FUNCTIONS



Content filtering: option that allows you to configure the restriction of the content that minors can access personalized way or according to your age.

Settings protection: Allows you to set a PIN code to protect access to application settings from unwanted modifications.

S O C I A L M E D I A

Youtube



- Parental control options available in the account setting.

Functions

- Content filtering: allows you to discard in searches content rated for adults, preventing access to the comments of all the videos that are played.
- Settings protection: you can block this settings if you use Family Link

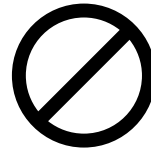
Instagram



Time control: you can set a daily reminder of time, which will notify the minor when the time has elapsed established



Monitoring: the application creates a daily report indicating the time employee on the social network.



Content filtering: it is possible to configure the account to be private, restrict comments from unknown people (outside from your contact list) or block comments.



WHERE CAN WE ASK FOR HELP?

1. GO TO CUSTOMER SERVICE.

MOST MANUFACTURERS OFFER PHONE SUPPORT, CHAT SUPPORT OR HELP GUIDES FOR CONFIGURING SETTINGS. PARENTAL CONTROL AND IMPROVE DEVICE SECURITY.

2. CONSULT THE TOOL CATALOG.

YOU WILL FIND DETAILED FILES FOR EACH TOOL, WITH LINKS OF INTEREST AND STEP-BY-STEP DESCRIPTIONS FOR CONFIGURE THEM.

